



# FISH HATCHERY NEWS

Newsletter of the Cold Spring Harbor Fish Hatchery & Aquarium • Fall 2011 • Volume 27 No. 4

## Animal Spotlight: Eastern Painted Turtle

Painted turtles, *Chrysemys pictus*, are one of the most common pond turtles in North America. The species name *pictus* is derived from the Latin word for “colored”. Of the four species of painted turtle, the eastern painted turtle is the only species native to Long Island. They can be found in slow moving, shallow water ponds, marshes, lakes and wetlands. They prefer habitats with a soft bottom and lots of vegetation where they can feed on aquatic invertebrates, fishes, frogs and vegetation.

Eastern painted turtles are easily identified by their broad, flattened shells with a smooth edge. The carapace (back shell) is an olive to black color with red bars around the edges and their plastron (bottom shell) is yellow. Their skin is olive-black with red and yellow stripes on their legs, arms and necks. Males can be identified by their long front claws and long, thick tails, while females have a longer shell, shorter claws and shorter tail. They typically grow to an average length of 4.5-6 inches long with some reaching a length of 7.5 inches.

As cold-blooded animals, turtles are not capable of internally regulating their body temperature making it necessary to spend several hours a day basking in the sun. Their temperature must stay between 63° and 73°F to remain active. Similar to humans running a fever, painted turtles can increase their body temperature by 8°F when fighting an infection. As temperatures decrease during the winter painted turtles will dig into the mud on the bottom of the pond to hibernate. Their metabolism slows significantly and they can absorb enough



oxygen through their skin to sustain them during hibernation. On a warm, winter day you may even see a painted turtle come out of hibernation and enjoy basking in the sun before returning back to the muddy bottom until early spring.

During late spring females venture onto land to lay eggs in a nest dug into the sandy soil. These eggs take about 2 to 3 months to fully develop. The sex of the turtles depends on egg temperature during development. The majority of eggs with a temperature below 81°F will be males while those above 81°F will be females. Hatchling turtles use their egg tooth to crack open the shell and they typically remain in the nest for about 1 to 2 weeks before emerging and heading for the safety of the water. A small number of turtles will overwinter in their nest and emerge the following spring. It is during the period of development and the hatchling stage that turtles are most susceptible to predators (snakes, birds, insects, fish, frogs, turtles and small mammals). Predators of adult turtles include raccoons, hawks and ospreys.

A turtle's best line of defense against predators is its shell made from bone. The coloration of their shell enables them to camouflage into the bottom of the pond and if found, protects them against attack. Turtles are also known to kick, scratch, bite and urinate on potential predators if necessary.

Painted turtles also have to avoid human intrusion. Turtles encounter cars on the road and are collected for the black market pet trade. In New York State, it is illegal to remove turtles from the wild or to have a native species as a pet. So if you see a turtle wandering through your neighborhood, leave it be. It is probably searching for food or a nesting site. If the turtle is in the street and in danger of getting hit by a car, move it across the street in the direction it was heading, but otherwise let it continue on its path.

Information on sponsoring an eastern painted turtle can be found on our website: [www.cshfha.org](http://www.cshfha.org).

## Trivia

How do turtles protect themselves?

*Read the Fish Hatchery News for the answer.*

# Upcoming Events at the Hatchery

## Special Events

### Fall Fair

Sat, September 24 from 10am-4:30pm  
Rain date: October 1 from 10am-4:30pm

### Halloween at the Hatchery

October 24 through 31

### Egg Stripping Demonstrations

Sat and Sun, October 29 and 30 at 1pm and 3pm  
Sat and Sun, November 5 and 6 at 1pm and 3pm  
Tues, November 8 at 1pm and 3pm  
Sat and Sun, November 12 and 13 at 1pm and 3pm

### Veteran's Day - Veterans in FREE

Must show military ID.  
Fri, November 11

*The Hatchery will be closed on Thanksgiving and Christmas Day.*

## Ongoing Events

### Catch & Keep Fishing

Fri through Tues, 10am-12pm and 1-3pm

### Fish Feeding Demonstrations

Sat and Sun at 11am and 2pm  
Wed and Thurs at 1pm, 2pm and 3pm

## Pollywog Adventures

Thursdays at 11am through November 17  
[www.cshfha.org/enrich.html](http://www.cshfha.org/enrich.html)

Visit our website for details or to see a complete list of events: [www.cshfha.org](http://www.cshfha.org).



Follow us on Facebook!

## Birthday Parties

Celebrate your birthday at the Hatchery with a live animal presentation and fish feeding!

For children turning at least 3 years old.  
\$200 plus a family membership

Visit our website or contact the Hatchery for details.  
[www.cshfha.org](http://www.cshfha.org)  
[fisheducator@cshfha.org](mailto:fisheducator@cshfha.org)  
(516) 692-6768

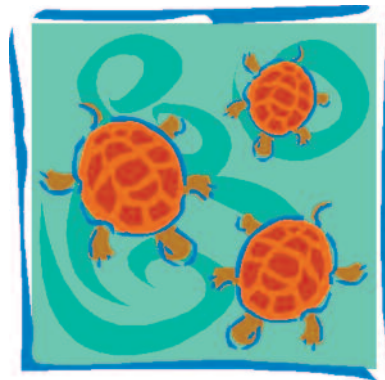


## Trout Caviar

Looking for a new idea for your next dinner party? We are now taking orders for fresh brook trout roe. Eggs will be ready for pickup from late October to early November. Contact the Hatchery to reserve your order now. All orders must be placed by November 4th.

### Etang Trois Caviar

Have ready 1 pound raw, rinsed trout eggs. Bring 3 quarts of water to a boil. Remove pot from the burner. Pour in 1 pound of raw fish eggs. Stir quickly and leave eggs in the water for about 1 minute. Pour into a strainer and run cold water over the eggs for 3 minutes. Drain very well. Stir in 1½ teaspoons of kosher salt. Pour into small sealable jars and leave in the refrigerator at least two days.



**Turtle hatchlings will soon be on display in the Ross Building. Come see them swim, dig, climb and dive.**

## Fall Fair

A family comes to the Cold Spring Harbor Fish Hatchery & Aquarium's Fall & Spring Environmental Fairs not only expecting to have a great time, but also to learn something about the natural world. And they do, on both accounts. That children learn best while doing, is a well established fact. Moreover, when that doing includes fun, children learn even better. That's also one of those well established educational facts. To increase both fun and learning at the Hatchery's upcoming Fall Fair, a new series of events have been planned. In addition to the opportunity for children ages 12 and under to go fishing in the Hatchery's tidal raceway, with all gear provided, a room will be set up for colorful nature related crafts. Live animal presentations and fish feeding demonstrations will be held as well. So mark your calendars, the Hatchery's Fall Fair takes place Saturday, Sept. 24, from 10:00am - 4:30 pm, rain date, Sat. Oct 1st.

## Holiday Gifts

With the approach of the holiday season, people are always looking for the perfect gift to give friends and family. This year sponsor an animal in their name. The money donated goes to enhancing the livelihood of the animal and expanding our educational programs. Do you love going to the Hatchery and think your friends or family would love it to? Purchase a gift membership and the recipient will receive a Hatchery T-shirt, trout food funtainer, and all the benefits of a Hatchery membership. Visit our website or contact the Hatchery for details.

**There will be a 25% holiday discount for Hatchery members on any gift shop item during the month of December.**

## Pollywog Adventures

A shared experience for parents and their pollywogs. Come learn about the watery natural world which surrounds us. Children and parents will celebrate the Hatchery's exhibit animals through live animal shows, crafts, activities and stories. New events every week.

Recommended age: 3-5 years

Dates: Thursdays through November 17

Time: 11am - 12pm



RSVP requested. Walk-ins welcome if space allows. Limited spaces available.

Cost: \$2 with General Admission (\$1 for Members)

## Summer at the Hatchery

The warm days of summer bring many visitors to the Hatchery. Families can feed the hungry trout, try their hand at "Catch & Keep" trout fishing, and learn about the animals living in our local freshwater ecosystems. Throughout July and August we had a record number of students attending summer camps. During these programs, future scientists learned about the resident aquarium animals and wildlife that live at the Hatchery, and took expeditions to the neighboring salt marsh, pond and woodland habitats.

Volunteers are important to help the Hatchery during these busy times. They assist in everyday tasks including feeding animals, cleaning tanks, mowing lawns, digging for turtle eggs, helping during "Catch & Keep" fishing and acting as assistant instructors for our summer programs. We'd like to thank all of the volunteers who have helped us this summer: Morgan Brunelle, Jimmy Duerr, Marc Solomowitz, Michael Harian, Charlie Barba, Ivan Carballude, James Dickinson, Geena Golon and Kate Schramm.



*Photos taken by students during this summer's Nature Photography Workshops taught by professional nature photographer Michael Fairchild.*

## Kid's Corner

### Leaf Skeletons

Since it's time for all those leaves to start falling off the trees, why not try your hand at separating the leaf from it's skeleton? The skeleton is composed of veins, part of an intricate network which enables the leaf to get the minerals and water it needs to make food for the rest of the tree. For this activity, use a leaf with tough veins, like one from an oak tree.

First, place the leaf on an old piece of carpet, and then tap it with an old hairbrush. Turn the leaf over and tap the other side. You'll be left with only the veins after a short while. You will then have to dry the leaf skeleton between layers of weighted newspaper. Place a heavy book or rocks on top of the newspaper, with the leaf's veins in between the paper. Leave it to dry for a couple of days. When it has dried out, mount the skeleton on paper and place it in between two pieces of glass held together by tape. It will then be ready for viewing by your entire family!



*Have a picture, story, or poem about the Hatchery? Send it in for publication in our future newsletters.*

*Attn: Kid's Corner, CSH Fish Hatchery & Aquarium, 1660 Route 25A, Cold Spring Harbor, NY 11724.*

**Fish Hatchery News** is a publication of the Cold Spring Harbor Fish Hatchery & Aquarium. As a not-for-profit charitable corporation, the Hatchery is an aquatic environmental education center dedicated to educating its visitors about the freshwater ecosystems of New York State.

**Board of Trustees**

Mark Trotter, *President*  
 Richard B. Cohen, *Vice President*  
 Henry C. Marshall, *Treasurer*



Martha Osterhus Carlstrom, *Secretary*

Anne Coneys

**Advisory**

Laurie J. Landeau, VMD  
 Eric Friedlander  
 Kerith McElroy-Freidberg  
 Pamela McGuinness  
 G. Robert Muller III  
 Elizabeth Powers  
 W. Fifield Whitman

Robert F. Copp  
 Carol DuBois  
 Jan Frey  
 Charles R. Holcomb  
 Mary Jo Hossfeld  
 Frances R. Storrs  
 Colton P. Wagner  
 Terry Walton  
 James D. Watson

**Honorary**

Susan Fairchild  
 Michael J. Murray, Jr.  
 Alexander B. Ross



**Hatchery Staff**

Norman Soule, *Director*  
 Steven DeSimone, *Assistant Director*  
 Krissy Forman, *Environmental Educator*  
 Diane Lundegaard, *Education Assistant*

Jeremy Deeg  
 Anna Harris  
 Jason Sikorski



**Hours**

10am to 5pm, seven days a week

June, July and August

Sat & Sun open until 6pm

Closed Easter Sunday, Thanksgiving & Christmas Day

**Admission**

\$6.00 for adults

\$4.00 for those ages 3 to 12 and over 65

Members and children age 2 & under are free

(516) 692-6768 • www.cshfha.org • info@cshfha.org

**MEMBERSHIP**

Membership offers free admission, quarterly newsletters, invitations to special events, discounts on seasonal programs for children, and discounts in our gift shop. A gift membership also includes a Hatchery T-shirt and fountains.

**YES**, I am interested in becoming a member of the Cold Spring Harbor Fish Hatchery & Aquarium.

DATE \_\_\_\_\_

NAME \_\_\_\_\_

ADDRESS \_\_\_\_\_

PHONE \_\_\_\_\_

E-MAIL \_\_\_\_\_

Please check if you would like to receive Hatchery mailings via e-mail. Your e-mail is for Hatchery use only.

- Student (Under 18) \$15
- Individual \$25
- Grandparent \$40
- Family \$50
- Supporting \$75
- Patron \$100
- Donor \$250
- Benefactor \$500

\*Add \$10 to any category to make it a gift membership. Please fill in the above contact information for the gift recipient and include your name and contact information with this form.

Enclosed is my check for \$\_\_\_\_\_ made payable to CSH Fish Hatchery & Aquarium.

Please bill my credit card \$\_\_\_\_\_.

Mastercard     Visa     Discover

Card number \_\_\_\_\_ Exp. date \_\_\_\_\_

Signature \_\_\_\_\_

Mail to: 1660 Route 25A, Cold Spring Harbor, NY 11724

Printed on Recycled Paper



1660 Route 25A  
 Cold Spring Harbor, NY 11724

An Aquatic Environmental  
 Education Center

NON-PROFIT ORG.  
 U.S. POSTAGE  
**PAID**  
 PERMIT #14  
 HUNTINGTON, NY

**RETURN SERVICE REQUESTED**